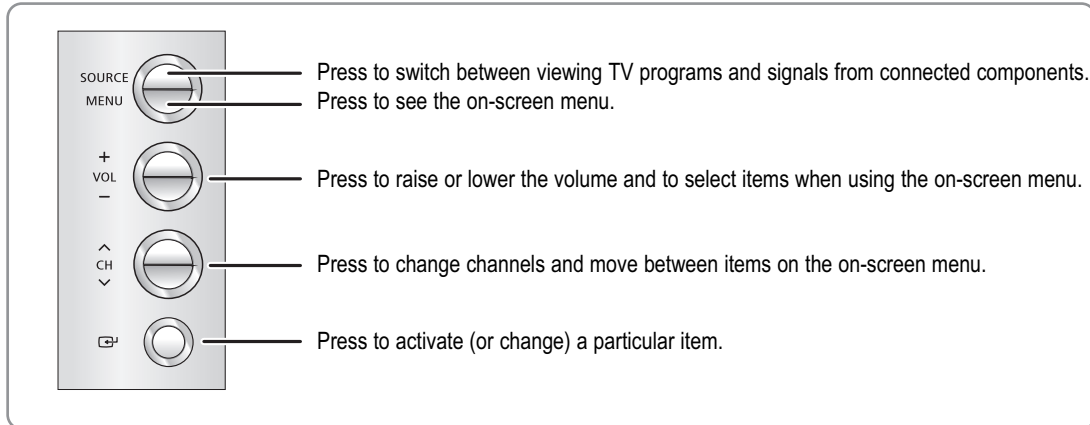


11. Operation Instruction & Installation

11-1 Product Features and Functions

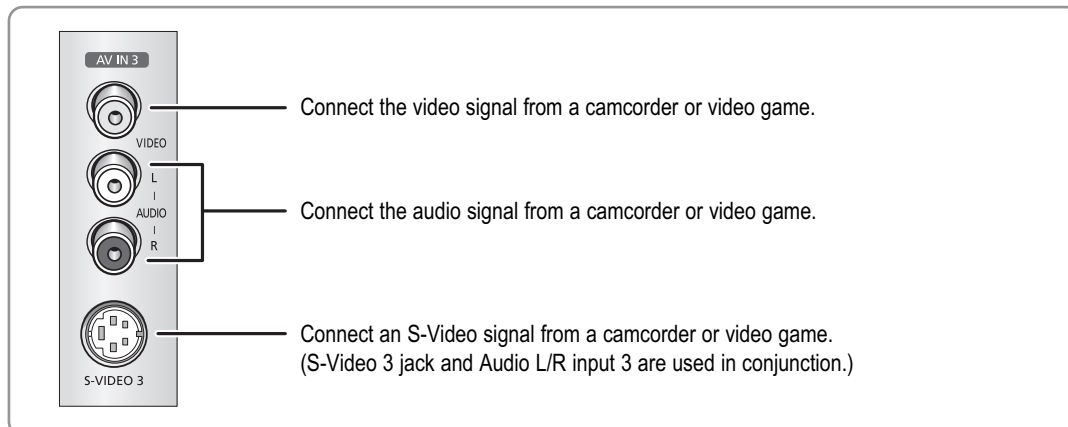
11-1-1 Right side buttons

The buttons on the right side panel control your TV's basic features, including the on-screen menu system. To use the more advanced features, you must use the remote control. The product color and shape may vary depending on the model.



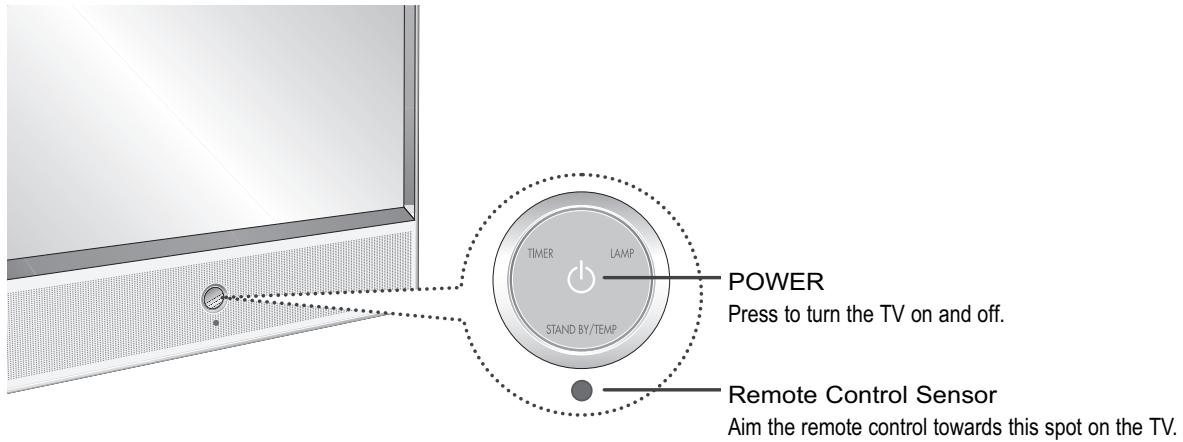
11-1-2 Side Panel Jacks

Use the right side panel jacks to connect a component that is used only occasionally (a camcorder or video game, for example). The product color and shape may vary depending on the model.



11-1-3 Front Panel LED Indicators

The three lights on the front panel indicate the status of your TV.



Indicator Light Key

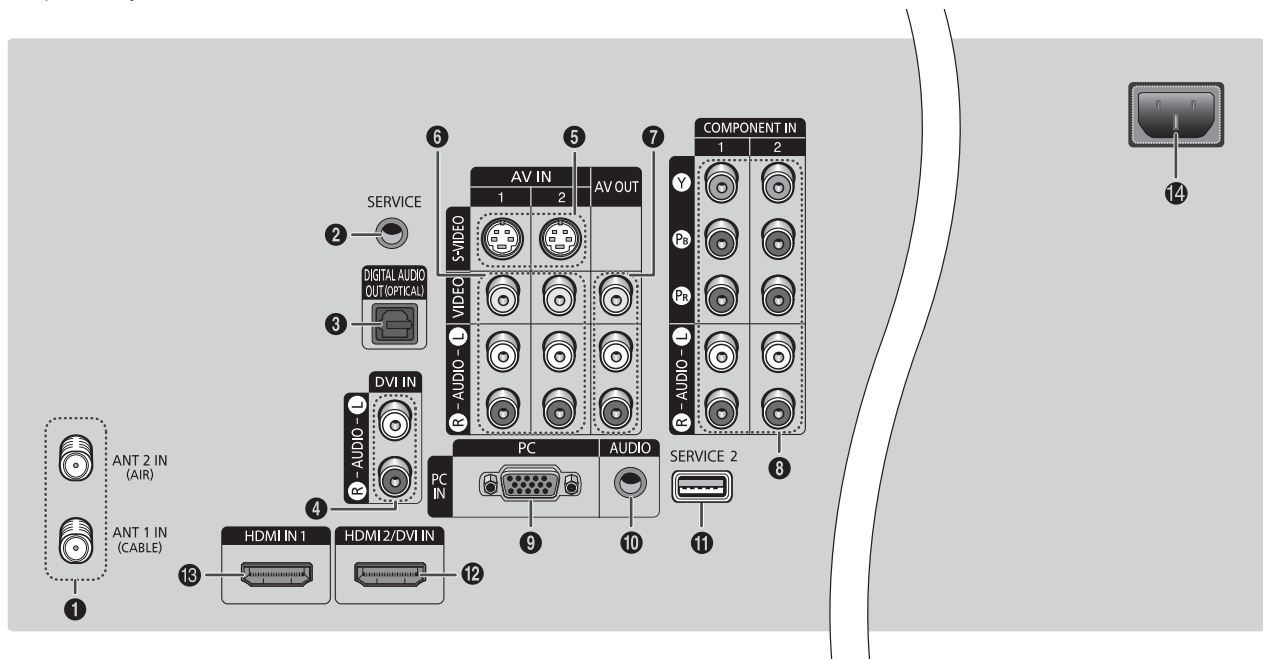
- : Light is On
- ◐ : Light is Blinking
- : Light is Off

TIMER	LAMP	STAND BY/TEMP	Indication
○	○	●	Standby state.
○	◐	○	The picture will automatically appear in about 15 seconds.
●	◐	○	Auto Timer ON/OFF has been set and the set will automatically be turned on in about 25 seconds.
◐	○	◐	A cooling fan inside the set is not operating normally.
○	◐	◐	Lamp cover on the rear of the set is not properly shut.
○	○	◐	Check if the ventilation hole on the rear of the set is blocked, because if the inner temperature is too high, the power will shut off.
◐	◐	◐	Lamp may be defective.

- It takes about 30 seconds for the TV to warm up, so normal brightness may not appear immediately.
- The TV has a fan to keep the inside lamp from overheating. You'll occasionally hear it working.

11-1-4 Rear Panel Jacks

Use the rear panel jacks to connect components such as a VCR. You can connect different components such as VCRs, Set-Top Box and a DVD player etc., because there are two sets of video input jacks and two sets of component video input jacks on the rear panel of your TV. For more information, see "Connections".

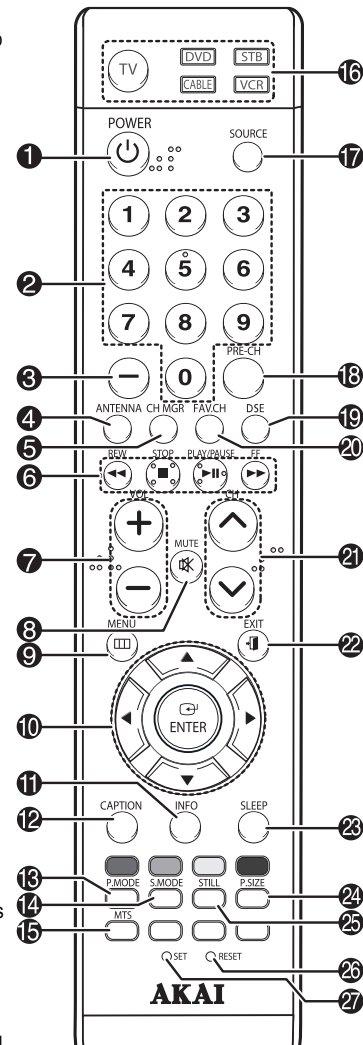


- ① ANTENNA terminals
Two independent cables or antennas can be connected to these terminals. Use "ANT 1 IN (CABLE)" and "ANT 2 IN (AIR)" terminals to receive a signal from VHF/UHF antennas or your cable system.
- ② SERVICE
This jack is for service only.
- ③ DIGITAL AUDIO OUT (OPTICAL) jack
Connect to a Digital Audio Component.
- ④ DVI (Digital Video Interface) AUDIO input jacks
Connect to the digital audio output jacks of a device with DVI output.
- ⑤ S-VIDEO input jacks
Connects an S-Video signal from an S-VHS VCR or DVD player.
- ⑥ VIDEO/AUDIO input jacks
Connect video/audio signals from external sources, such as VCR or DVD players.
- ⑦ VIDEO/AUDIO output jacks
Sends video/audio signals from the TV to an external source, such as a VCR. These jacks are available only in TV, Video and S-Video modes.
- ⑧ COMPONENT1, 2 jacks (Y, PB, PR, AUDIO L/R)
Use these jacks to connect the component video/audio signals from a DVD player or a Set-Top Box.
- ⑨ PC VIDEO Input jack
Connect these to the video output jack on your PC.
- ⑩ PC AUDIO Input jack
Connect these to the audio output jack on your PC.
- ⑪ SERVICE 2
This jack is for service only.
- ⑫ HDMI (High Definition Multimedia Interface)/
Connect to the HDMI jack of a device with HDMI output. This input can also be used as a DVI connection with separate analog audio inputs. An optional HDMI/DVI cable will be necessary to make this connection. When using the optional HDMI/DVI adapter, the DVI analog audio inputs on your TV allow you to receive left and right audio from your DVI device. (Not compatible with PC)
- ⑬ HDMI (High Definition Multimedia Interface) Input jacks (HDMI IN 1)
Connect to the HDMI jack of a device with HDMI output.
- ⑭ POWER IN
Connect the supplied power cord.

11-1-5 Remote Control

You can use the remote control up to about 23 feet from the TV. When using the remote control, always point it directly at the TV. You can also use your remote control to operate your VCR, Cable box, DVD player or Samsung Set-Top Box.

- | | |
|---|---|
| <ol style="list-style-type: none"> 1. POWER
Turns the TV on and off. 2. Channel Number
Press to directly tune to a particular channel. 3. -
Press to select additional channels (digital and analog) being broadcast by the same station. For example, to select channel "54-3", press "54", then press "-" and "3". 4. ANTENNA
Press to select "AIR" or "CABLE". 5. CH MGR
Used to displays Channel Lists on the screen. 6. VCR/DVD Controls
Controls VCR or DVD functions: Rewind, Stop, Play/Pause, Fast Forward. 7. VOL +, VOL -
Press to increase or decrease the volume. 8. MUTE
Press to mute the TV sound. 9. MENU
Displays the main on-screen menu. 10. ▲, ▼, ◀, ▶, ENTER
Press to select highlight up, down, left, or right. While using the on-screen menus, press ENTER to activate (or change) a particular item. 11. INFO
Press to display information on the TV screen. 12. CAPTION
Controls the caption decoder. 13. P.MODE
Adjust the TV picture by selecting one of the preset factory settings (or select your personal, customized picture settings.) 14. S.MODE
Select Sound effect. (Refer to page 75) 15. MTS (Multichannel Television Stereo)
Press to choose Stereo, Mono or SAP (Secondary Audio Program). 16. Mode (TV/DVD/STB/CABLE/VCR)
Selects a target device to be controlled by the AKAI remote control (i.e., TV, DVD, STB, CABLE, or VCR). | <ol style="list-style-type: none"> 17. SOURCE
Press to display all of the available video sources (TV, AV1, AV2, AV3, S-Video1, S-Video2, S-Video3, Component1, Component2, PC, HDMI1, and HDMI2). 18. PRE-CH
Tunes to the previous channel. 19. DSE
DSE enhances the sound quality, automatically controls output, and prevents sound distortion. Press this button to set it On or Off. 20. FAV.CH (Favorite Channel)
Press to switch between your favorite channels. 21. CH ▲/▼
Press to change channels. 22. EXIT
Press to exit the menu. 23. SLEEP
Press to select a preset time interval for automatic shut off. 24. P.SIZE
Press to change the screen size. 25. STILL
Press to pause the current screen. 26. RESET
If your remote control is not functioning properly, take out the batteries and press the reset button for about 2~3 seconds. Re-insert the batteries and try using the remote control again. 27. SET
Used during set up of this remote control, so that it will work compatibly with other devices (Set-top box, VCR, Cable box, DVD, etc.) |
|---|---|



NOTES

- The Color buttons are used during the channel list function. (Refer to pages 48~53)
- This is a special remote control for the visually impaired, and has Braille points on the POWER, VOL +, VOL -, CH ▲/▼, STOP, and PLAY/PAUSE buttons.